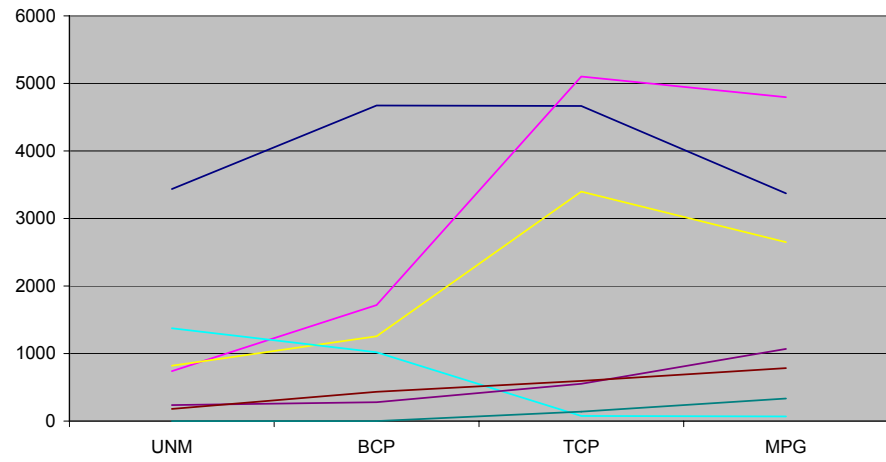


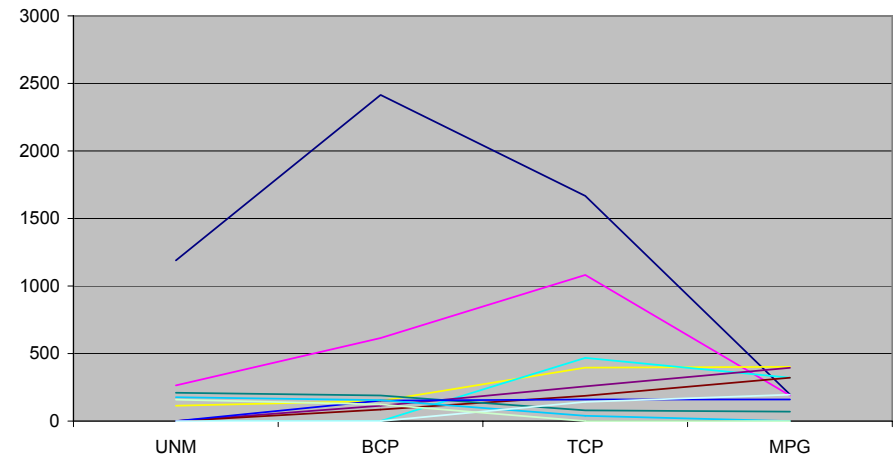
Wires

Expression profiles of individual families of cytoskeletal genes analysed (total 192 genes). Of these, 173 genes (90%) were present on the AffyChip and 116 (67%) gave positive expression signal in at least one developmental stage. The overall expression profile followed the common scheme with two subsequent developmental programs with the switch point at the time of PMII (Early program - larger group of less abundantly expressed genes, Late program - smaller group of more abundant genes). There was significant variation among individual gene families showing preferential expression of their members at particular stages of development.

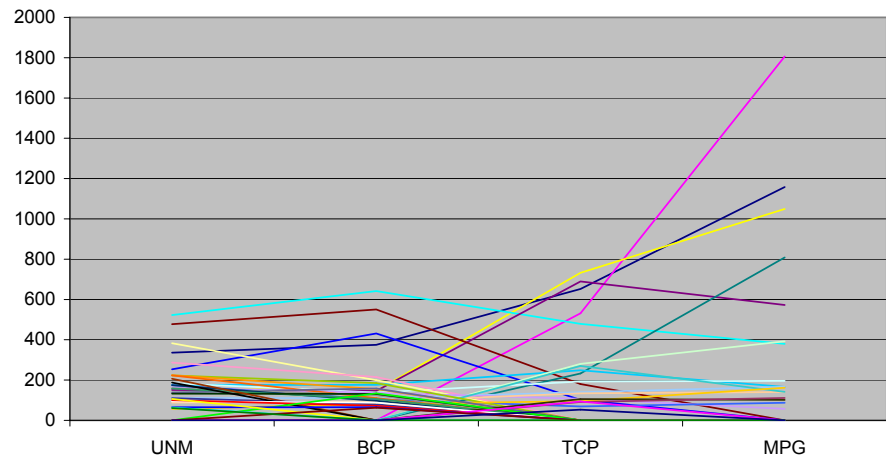
Actin



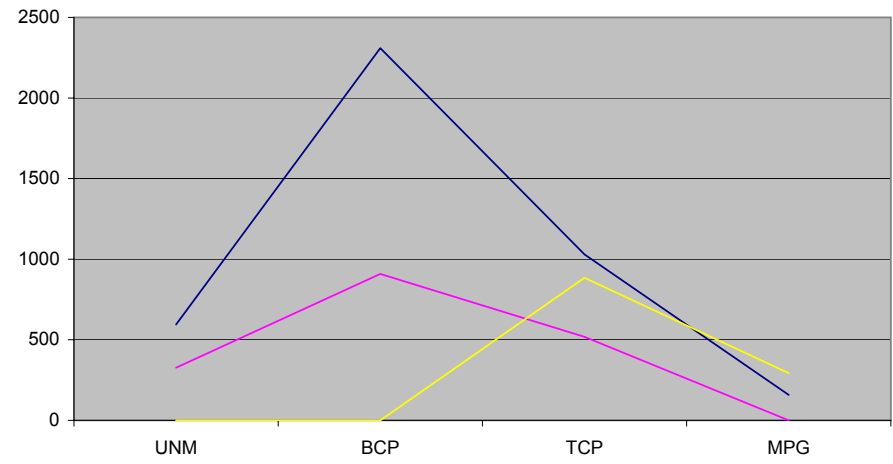
Myosin



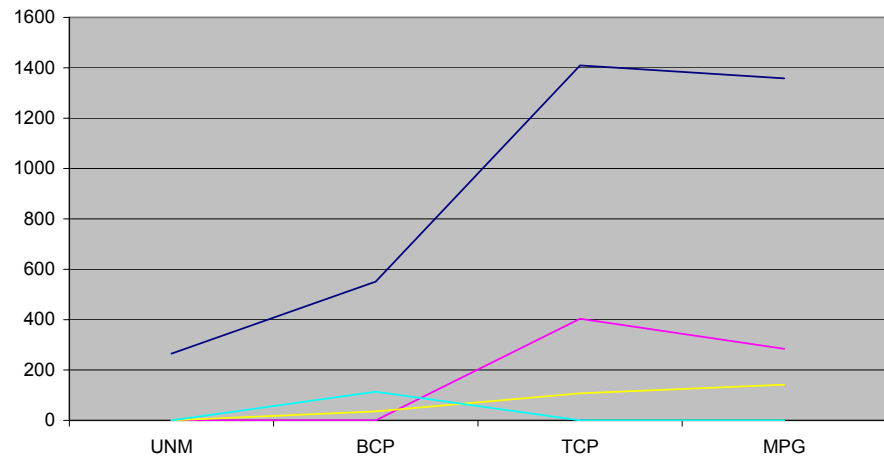
Kinesin



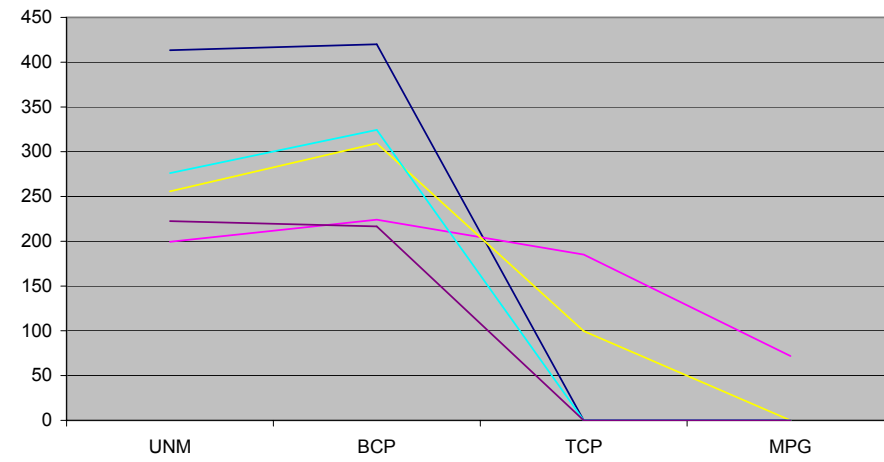
Annexin



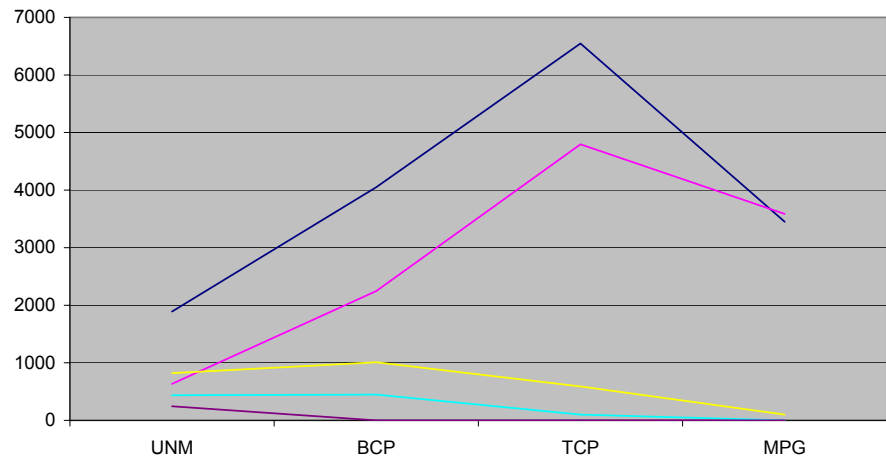
Villin



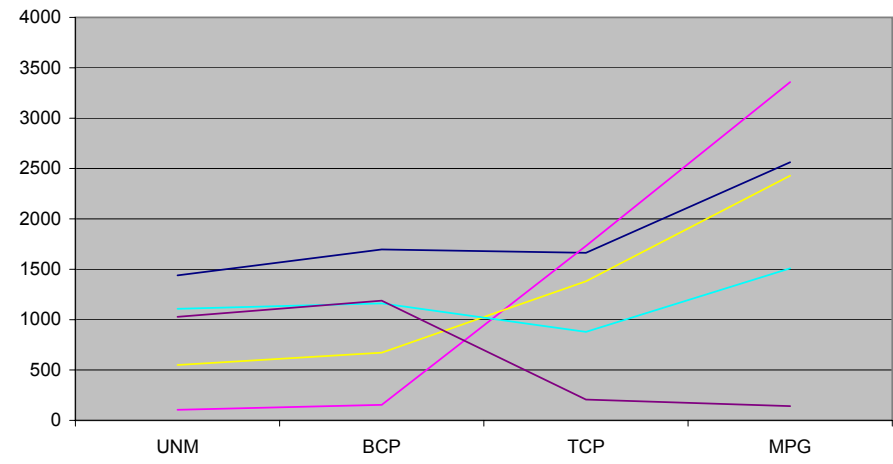
ARP



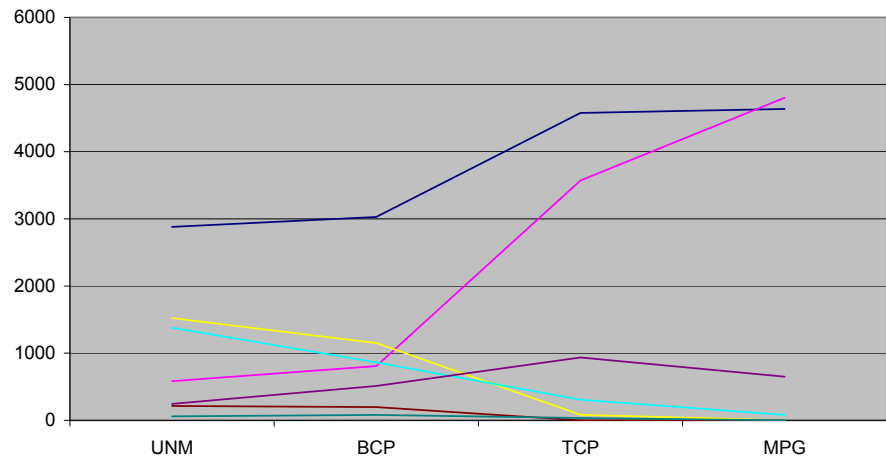
Profilin



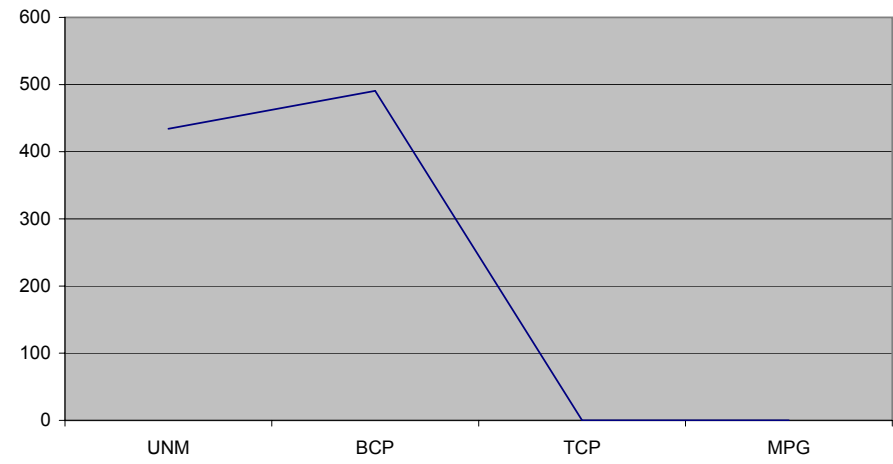
Tubulin alpha



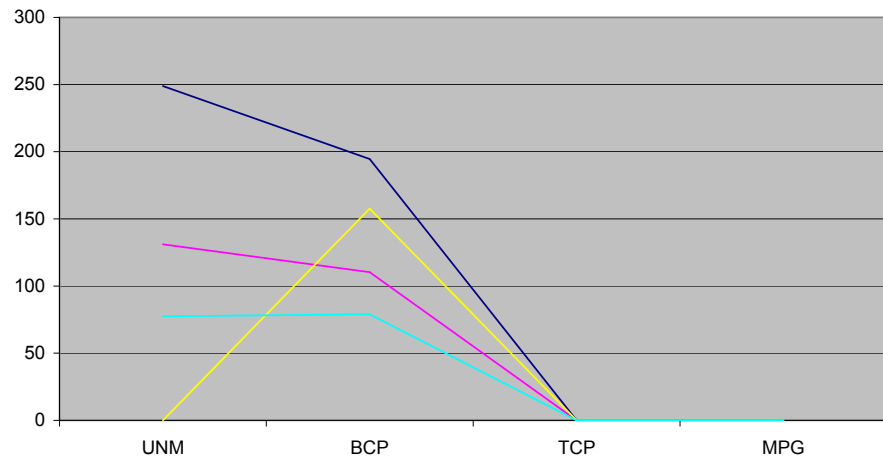
Tubulin beta



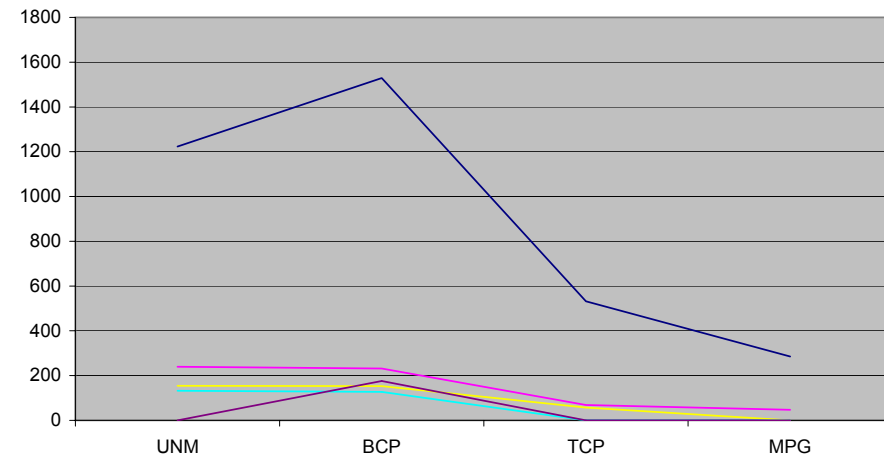
Tubulin gamma



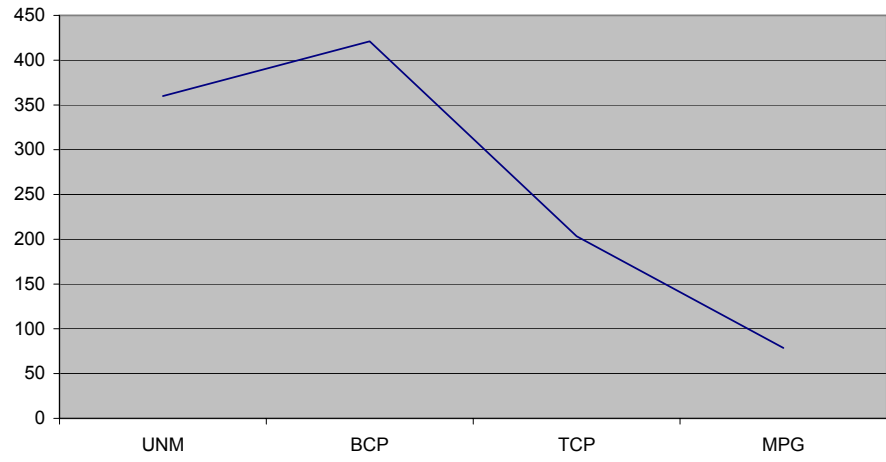
Tubulin family protein



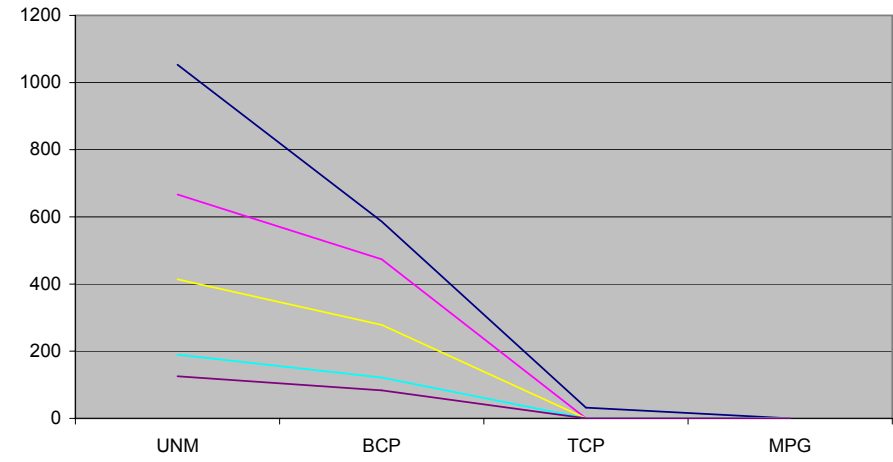
Tubulin folding cofactor



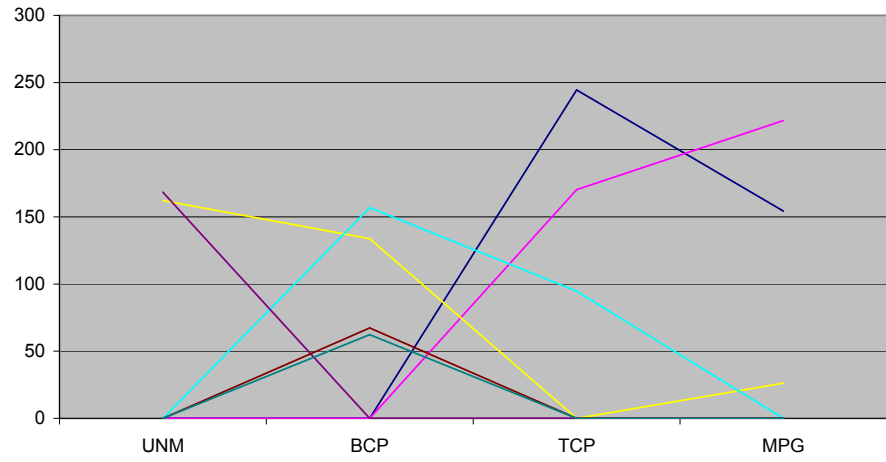
CFC



ADF



Formin



Fimbrin

